

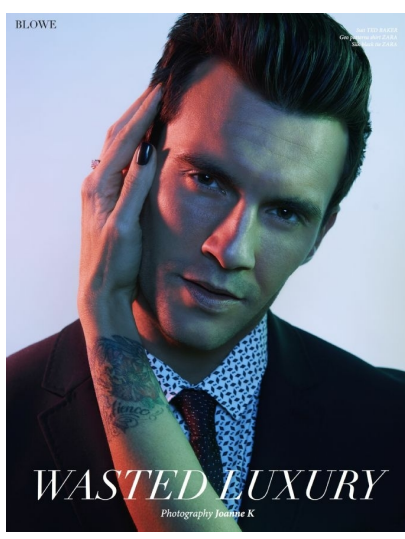
JESSE DUNPHY

HEIGHT 5' 11" (180CM) COLLAR 16" SUIT 40" (102CM) WAIST 32" (81CM) SLEEVE 32" (81CM) INSEAM 31" SHOES 10US HAIR BROWN EYES BROWN



JESSE DUNPHY

HEIGHT 5' 11" (180CM) COLLAR 16" SUIT 40" (102CM) WAIST 32" (81CM) SLEEVE 32" (81CM) INSEAM 31" SHOES 10US HAIR BROWN EYES BROWN



JESSE DUNPHY

HEIGHT 5' 11" (180CM) COLLAR 16" SUIT 40" (102CM) WAIST 32" (81CM) SLEEVE 32" (81CM) INSEAM 31" SHOES 10US HAIR BROWN EYES BROWN



© pamelaparis.com

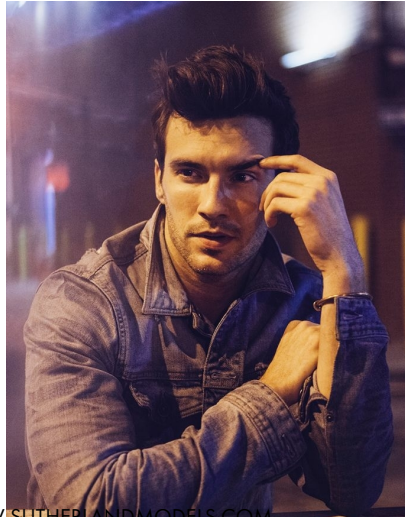


WAKE, WORK, WHISKY
A GENTLEMAN GUIDE TO A DAPPER 9-5

PHOTOGRAPHER - Lindsay Anne DeLong
STYLING - James Lind-Smith
CREATIVE DIRECTOR - JASON BING
STYLING ASSISTANTS - Rachel Debrao - Danielle Hoffman
HAIR - MAKE UP - Ryan Campbell
MODEL - Jesse Dunphy (Sutherland Models)
CLOTHING PROVIDED BY - V. Huxford - J. Huxford - J. Tarnas

© pamelaparis.com

© pamelaparis.com



JESSE DUNPHY

HEIGHT 5' 11" (180CM) COLLAR 16" SUIT 40" (102CM) WAIST 32" (81CM) SLEEVE 32" (81CM) INSEAM 31" SHOES 10US HAIR BROWN EYES BROWN



JESSE DUNPHY

HEIGHT 5' 11" (180CM) COLLAR 16" SUIT 40" (102CM) WAIST 32" (81CM) SLEEVE 32" (81CM) INSEAM 31" SHOES 10US HAIR
BROWN EYES BROWN

