

# VICTORIA THOMSEN

HEIGHT 5' 11" (180CM)  
(32EUR)

BUST 34A  
SHOES 9US

WAIST 24½" (62.5CM)  
HAIR STRAWBERRY BLOND

HIPS 37" (94CM)  
EYES BLUE

DRESS 2US



# VICTORIA THOMSEN

erland  
suth  
mo  
dels

HEIGHT 5' 11" (180CM)    BUST 34A    WAIST 24½" (62.5CM)    HIPS 37" (94CM)    DRESS 2US  
(32EUR)    SHOES 9US    HAIR STRAWBERRY BLOND    EYES BLUE



*This page: Headband, Top, Skirt,  
Belt, Socks, and Sandals (Price upon  
request) Miu Miu. Opposite page:  
Cigarette (880) and Harpout  
(87,200) HERMÈS, Shirt (8990)  
SACAI, Tie (81,35) BOSS, Belt (Price  
upon request) LOUIS VUITTON.*

# VICTORIA THOMSEN

erland  
suth  
mo  
dels

HEIGHT 5' 11" (180CM)    BUST 34A    WAIST 24½" (62.5CM)    HIPS 37" (94CM)    DRESS 2US  
(32EUR)    SHOES 9US    HAIR STRAWBERRY BLOND    EYES BLUE



## Nowhere Girl

A CAREFREE *spirit radiates* A LAIDBACK VIBE IN AN *unorthodox* STYLE. LIBERATED SILHOUETTES SHIFT FROM *stylish jackets* to RETRO DRESSES IN LUXURIOUS FABRICS WHICH *sift* THROUGH TIME AND SPACE.

Photographer Royal Gilbert  
Fashion Editor Fritz

# VICTORIA THOMSEN

erland  
suth  
mo  
dels

HEIGHT 5' 11" (180CM)  
(32EUR)

BUST 34A  
SHOES 9US

WAIST 24½" (62.5CM)  
HAIR STRAWBERRY BLOND

HIPS 37" (94CM)  
EYES BLUE

DRESS 2US





# VICTORIA THOMSEN

HEIGHT 5' 11" (180CM)    BUST 34A    WAIST 24½" (62.5CM)    HIPS 37" (94CM)    DRESS 2US  
(32EUR)    SHOES 9US    HAIR STRAWBERRY BLOND    EYES BLUE



# VICTORIA THOMSEN

HEIGHT 5' 11" (180CM)  
(32EUR)

BUST 34A  
SHOES 9US

WAIST 24½" (62.5CM)  
HAIR STRAWBERRY BLOND

HIPS 37" (94CM)  
EYES BLUE

DRESS 2US



# VICTORIA THOMSEN

erland suth  
dels mo

HEIGHT 5' 11" (180CM)    BUST 34A    WAIST 24½" (62.5CM)    HIPS 37" (94CM)    DRESS 2US  
(32EUR)    SHOES 9US    HAIR STRAWBERRY BLOND    EYES BLUE



## PLUM POSITION

Emerging Brit Richard Quinn creates regal dresses in florals reminiscent of retro garden furniture (and enjoys the distinction of being the only designer to host the Queen at a catwalk show).  
Richard Quinn dress, £2,345; top, £644; leggings, £392 through [net-a-porter.com](http://net-a-porter.com). Vintage earrings and necklace, price on request through [carolelambbaum.com](http://carolelambbaum.com). Shoes, \$275 at [Cos.com](http://Cos.com).

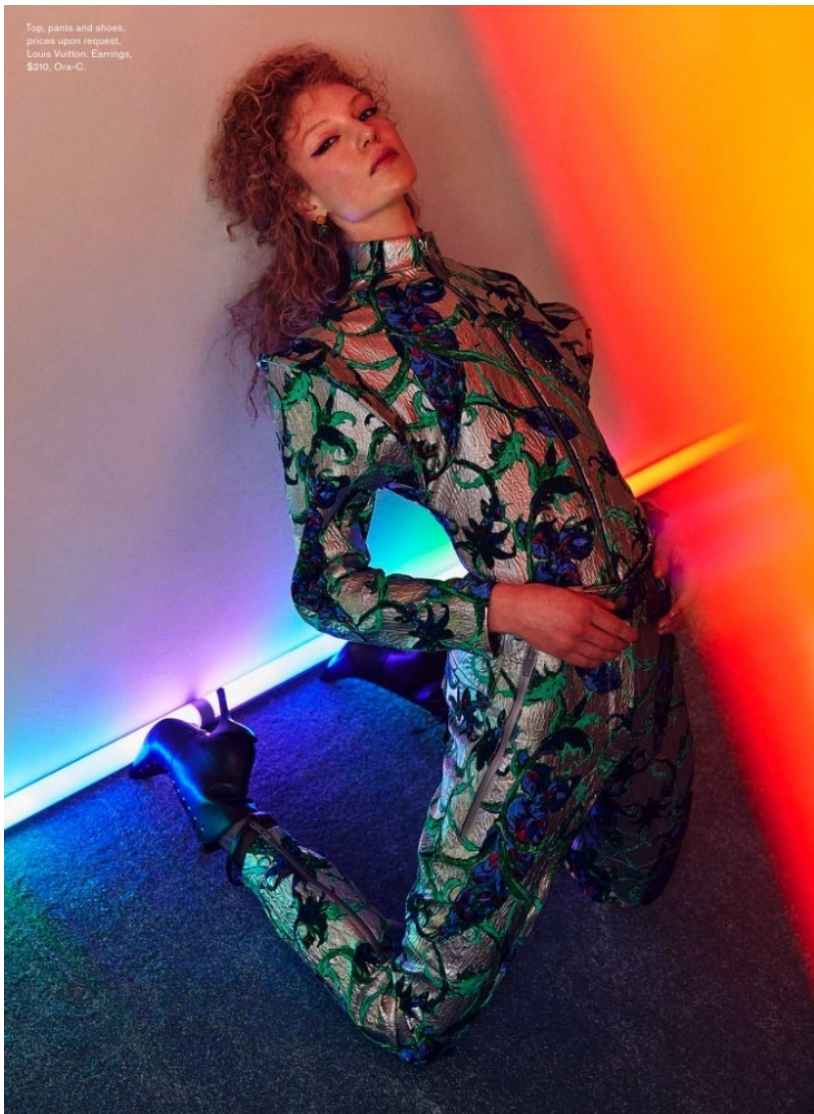
THE GLOBE AND MAIL STYLE ADVISOR 35



# VICTORIA THOMSEN

erland suth  
mo  
dels

HEIGHT 5' 11" (180CM) BUST 34A WAIST 24½" (62.5CM) HIPS 37" (94CM) DRESS 2US  
(32EUR) SHOES 9US HAIR STRAWBERRY BLOND EYES BLUE





# VICTORIA THOMSEN

erland  
suth  
mo  
dels

HEIGHT 5' 11" (180CM)  
(32EUR)

BUST 34A  
SHOES 9US

WAIST 24½" (62.5CM)  
HAIR STRAWBERRY BLOND

HIPS 37" (94CM)  
EYES BLUE

DRESS 2US



Dress COACH, Coat VICTORIA HAYES, Boots GLANVITO ROSSI

# VICTORIA THOMSEN

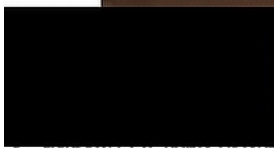
HEIGHT 5' 11" (180CM)  
(32EUR)

BUST 34A  
SHOES 9US

WAIST 24½" (62.5CM)  
HAIR STRAWBERRY BLOND

HIPS 37" (94CM)  
EYES BLUE

DRESS 2US



Dress FLEURDUMAL, Hat VICTOROSBORNE

# VICTORIA THOMSEN

erland  
suth  
mo  
dels

HEIGHT 5' 11" (180CM)    BUST 34A    WAIST 24½" (62.5CM)    HIPS 37" (94CM)    DRESS 2US  
(32EUR)    SHOES 9US    HAIR STRAWBERRY BLOND    EYES BLUE

**BIRKS**  
BIJOUX 1879 CANADA



OUR SPIRIT. OUR NATURE.

# VICTORIA THOMSEN

sutherland  
models

HEIGHT 5' 11" (180CM)    BUST 34A    WAIST 24½" (62.5CM)    HIPS 37" (94CM)    DRESS 2US  
(32EUR)    SHOES 9US    HAIR STRAWBERRY BLOND    EYES BLUE



*This page: Coat (\$6,000) VALENTINO. Headband (Price upon request) MILUMILU. Socks (Price upon request) PRADA. Boots (Price upon request) LOUIS VUITTON. Opposite page: Black silk wool tailored cocktail jacket with satin lapel (\$4,800), Black silk wool tuxedo trousers with satin (\$2,400), and Black satin Mary Jane pumps (\$1,940) TOM FORD. Necklace (Price upon request) JENNIFER MEYER. Headband (Price upon request) MILUMILU. Photographer ROYAL GILBERT. Fashion Editor FRITZ. Makeup & Hair PACO PUERTAS at FOLJO using MAC COSMETICS and L'OREAL PROFESSIONNEL. Model VICTORIA at SUTHERLAND MODELS. Photographer Assistants JULES and EMILY.*



# VICTORIA THOMSEN

erland  
suth  
mo  
dels

HEIGHT 5' 11" (180CM)  
(32EUR)

BUST 34A  
SHOES 9US

WAIST 24½" (62.5CM)  
HAIR STRAWBERRY BLOND

HIPS 37" (94CM)  
EYES BLUE

DRESS 2US



# VICTORIA THOMSEN

erland  
suth  
mo  
dels

HEIGHT 5' 11" (180CM)  
(32EUR)

BUST 34A  
SHOES 9US

WAIST 24½" (62.5CM)  
HAIR STRAWBERRY BLOND

HIPS 37" (94CM)  
EYES BLUE

DRESS 2US



# VICTORIA THOMSEN

erland  
suth  
mo  
dels

HEIGHT 5' 11" (180CM)  
(32EUR)

BUST 34A  
SHOES 9US

WAIST 24½" (62.5CM)  
HAIR STRAWBERRY BLOND

HIPS 37" (94CM)  
EYES BLUE

DRESS 2US





# VICTORIA THOMSEN

erland suth  
mo  
dels

HEIGHT 5' 11" (180CM) BUST 34A WAIST 24½" (62.5CM) HIPS 37" (94CM) DRESS 2US  
(32EUR) SHOES 9US HAIR STRAWBERRY BLOND EYES BLUE



Wolford turtleneck, \$400, Naruhita leather pants, \$895, and leather button-up shirt, \$510, Gianni leopard-print raincoat, \$885, Rick Owens puffer coat, \$2,460, all from Holt Renfrew; Michael Michael Kors boots, \$288, from Michael Kors.



# VICTORIA THOMSEN

HEIGHT 5' 11" (180CM)    BUST 34A    WAIST 24½" (62.5CM)    HIPS 37" (94CM)    DRESS 2US  
(32EUR)    SHOES 9US    HAIR STRAWBERRY BLOND    EYES BLUE



# VICTORIA THOMSEN

erland  
suth  
mo  
dels

HEIGHT 5' 11" (180CM)    BUST 34A    WAIST 24½" (62.5CM)    HIPS 37" (94CM)    DRESS 2US  
(32EUR)    SHOES 9US    HAIR STRAWBERRY BLOND    EYES BLUE



# VICTORIA THOMSEN

HEIGHT 5' 11" (180CM) BUST 34A WAIST 24½" (62.5CM) HIPS 37" (94CM) DRESS 2US  
(32EUR) SHOES 9US HAIR STRAWBERRY BLOND EYES BLUE



# VICTORIA THOMSEN

erland  
suth  
mo  
dels

HEIGHT 5' 11" (180CM)    BUST 34A    WAIST 24½" (62.5CM)    HIPS 37" (94CM)    DRESS 2US  
(32EUR)    SHOES 9US    HAIR STRAWBERRY BLOND    EYES BLUE





# VICTORIA THOMSEN

erland  
suth  
mo  
dels

HEIGHT 5' 11" (180CM)    BUST 34A    WAIST 24½" (62.5CM)    HIPS 37" (94CM)    DRESS 2US  
(32EUR)    SHOES 9US    HAIR STRAWBERRY BLOND    EYES BLUE



# VICTORIA THOMSEN

HEIGHT 5' 11" (180CM)  
(32EUR)

BUST 34A  
SHOES 9US

WAIST 24½" (62.5CM)  
HAIR STRAWBERRY BLOND

HIPS 37" (94CM)  
EYES BLUE

DRESS 2US



# VICTORIA THOMSEN

erland  
suth  
mo  
dels

HEIGHT 5' 11" (180CM)    BUST 34A    WAIST 24½" (62.5CM)    HIPS 37" (94CM)    DRESS 2US  
(32EUR)    SHOES 9US    HAIR STRAWBERRY BLOND    EYES BLUE





# VICTORIA THOMSEN

HEIGHT 5' 11" (180CM) BUST 34A WAIST 24½" (62.5CM) HIPS 37" (94CM) DRESS 2US  
(32EUR) SHOES 9US HAIR STRAWBERRY BLOND EYES BLUE

